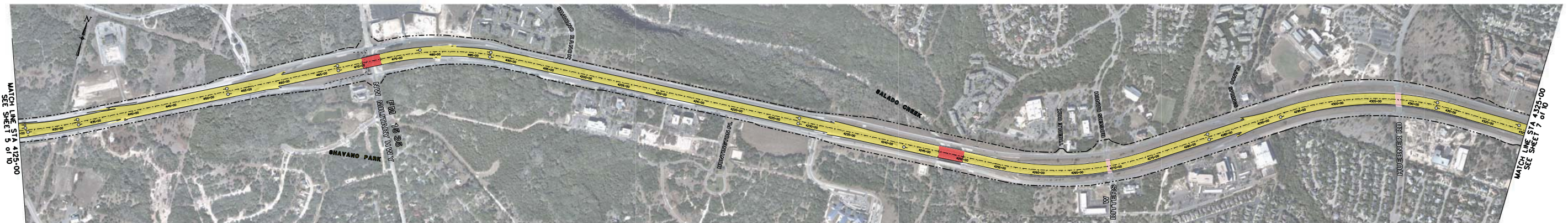


BUILD - NEW LANES MULTI MODAL UPGRADES

BUILD ALTERNATIVE 1



BUILD ALTERNATIVE 2



BUILD ALTERNATIVE 3

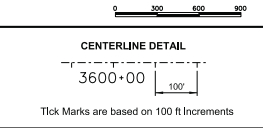


NOTES:  
December 2017 Aerial Photography  
Map Updated September 15, 2018

LOOP 1604 (US 90 - IH 35)  
Bexar County, Texas

CONCEPTUAL ALTERNATIVES SERIES  
MAP 6 of 10

LEGEND	
<span style="background-color: yellow; border: 1px solid black; display: inline-block; width: 15px; height: 10px;"></span>	General Purpose Lanes
<span style="background-color: purple; border: 1px solid black; display: inline-block; width: 15px; height: 10px;"></span>	Managed/Express Lanes
<span style="background-color: green; border: 1px solid black; display: inline-block; width: 15px; height: 10px;"></span>	Frontage Rd - New or Reconstruction
<span style="background-color: red; border: 1px solid black; display: inline-block; width: 15px; height: 10px;"></span>	Bridge - General Purpose Lanes
<span style="background-color: orange; border: 1px solid black; display: inline-block; width: 15px; height: 10px;"></span>	Bridge - Managed/Express Lanes
<span style="background-color: pink; border: 1px solid black; display: inline-block; width: 15px; height: 10px;"></span>	Bridge - Existing to Remain
<span style="border-bottom: 1px dashed gray; width: 20px; display: inline-block;"></span>	*Conceptual General Purpose Lanes
<span style="border-bottom: 1px dashed gray; width: 20px; display: inline-block;"></span>	**Conceptual Frontage Rd
<span style="border-bottom: 1px solid black; width: 20px; display: inline-block;"></span>	Existing ROW
<span style="border-bottom: 1px dashed orange; width: 20px; display: inline-block;"></span>	Proposed ROW



COMMENTS	
1.	
2.	
3.	
4.	
5.	
6.	
7.	
8.	
9.	
10.	
11.	
12.	
13.	
14.	



LEGEND	
<span style="background-color: yellow; border: 1px solid black; display: inline-block; width: 15px; height: 10px;"></span>	General Purpose Lanes
<span style="background-color: purple; border: 1px solid black; display: inline-block; width: 15px; height: 10px;"></span>	Managed/Express Lanes
<span style="background-color: green; border: 1px solid black; display: inline-block; width: 15px; height: 10px;"></span>	Frontage Rd - New or Reconstruction
<span style="background-color: red; border: 1px solid black; display: inline-block; width: 15px; height: 10px;"></span>	Bridge - General Purpose Lanes
<span style="background-color: orange; border: 1px solid black; display: inline-block; width: 15px; height: 10px;"></span>	Bridge - Managed/Express Lanes
<span style="background-color: pink; border: 1px solid black; display: inline-block; width: 15px; height: 10px;"></span>	Bridge - Existing to Remain
<span style="border-bottom: 1px dashed gray; width: 20px; display: inline-block;"></span>	*Conceptual General Purpose Lanes
<span style="border-bottom: 1px dashed gray; width: 20px; display: inline-block;"></span>	**Conceptual Frontage Rd
<span style="border-bottom: 1px solid black; width: 20px; display: inline-block;"></span>	Existing ROW
<span style="border-bottom: 1px dashed orange; width: 20px; display: inline-block;"></span>	Proposed ROW

LOOP 1604 (US 90 - IH 35)  
Bexar County, Texas

CONCEPTUAL ALTERNATIVES SERIES  
MAP 6 of 10